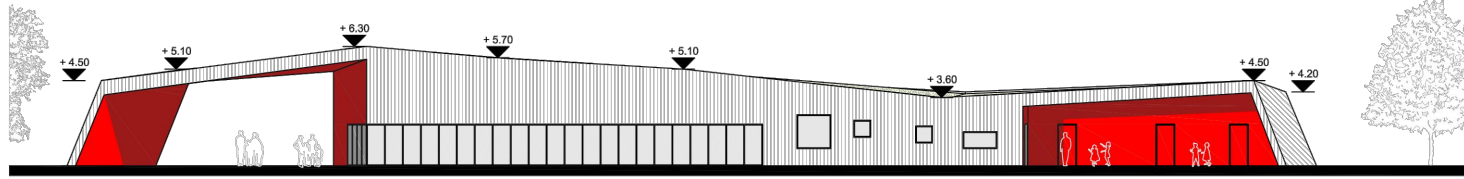
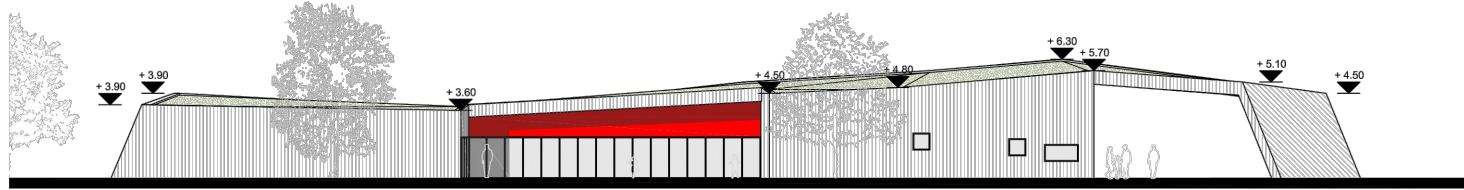


Anlage 9

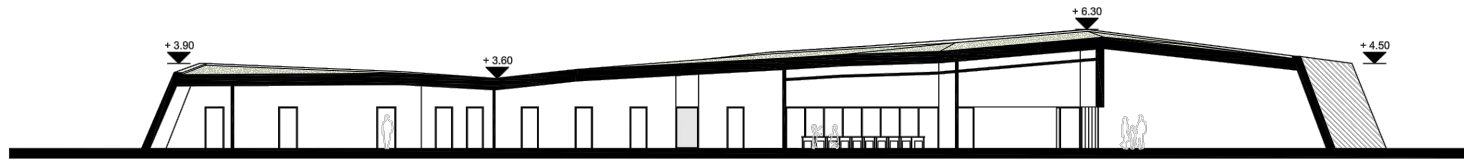
Ansicht Nord



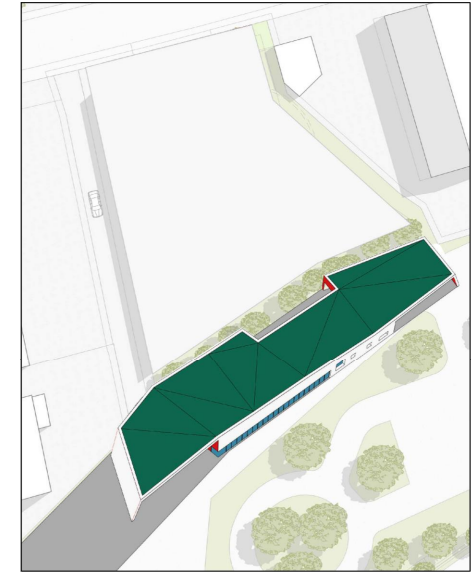
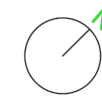
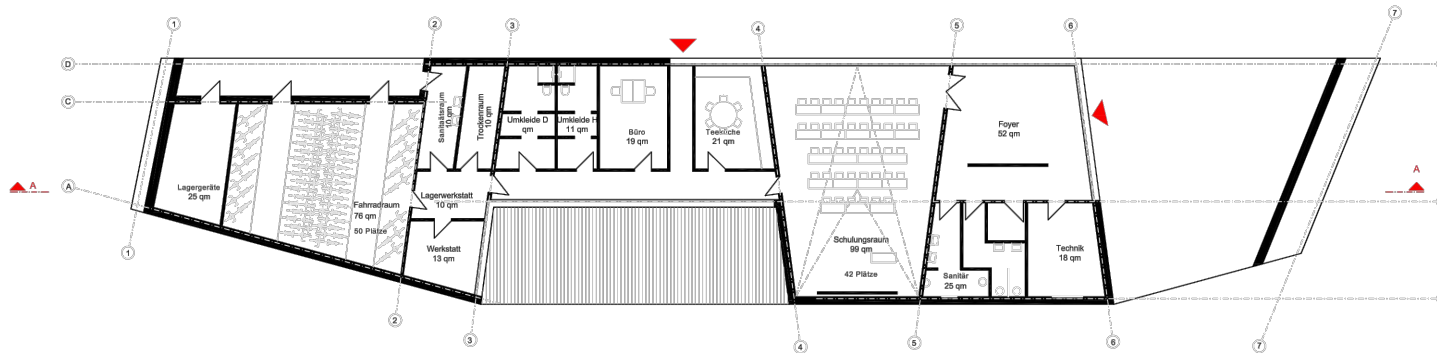
Ansicht Süd



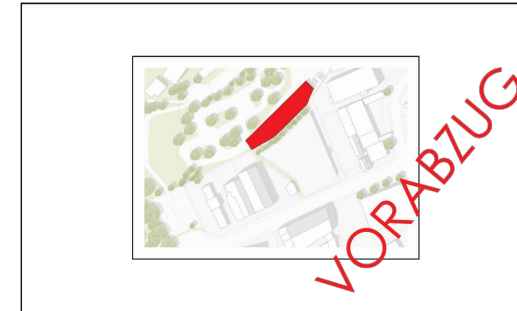
Schnitt A-A



Grundriss



Projekt-Nr.	Projekt	Kurzbezeichnung
876	JVS-Vogelsang	3-A-GR



Bauherr	Landeshauptstadt Stuttgart Hochbauamt 65-5 Hauptstätter Straße 66, 70178 Stuttgart
---------	---

Architekt	asp asp Architekten GmbH Talstraße 41 70188 Stuttgart Telefon: (0711) 2 23 36-0 Fax: -88 www.asp-stuttgart.de asp@asp-stuttgart.de
-----------	--

Fachplaner	
------------	--

Phase	03 Entwurfsplanung
-------	--------------------

Planbezeichnung	Jugendverkehrshule Grundriss
-----------------	------------------------------

Maßstab	1 : 200	Format	420 x 594 mm	Gezeichnet	bm	Datum	07.03.2018
	876 3 A GR E0 0 0		Projekt-Nr.		Phase		Planerst.