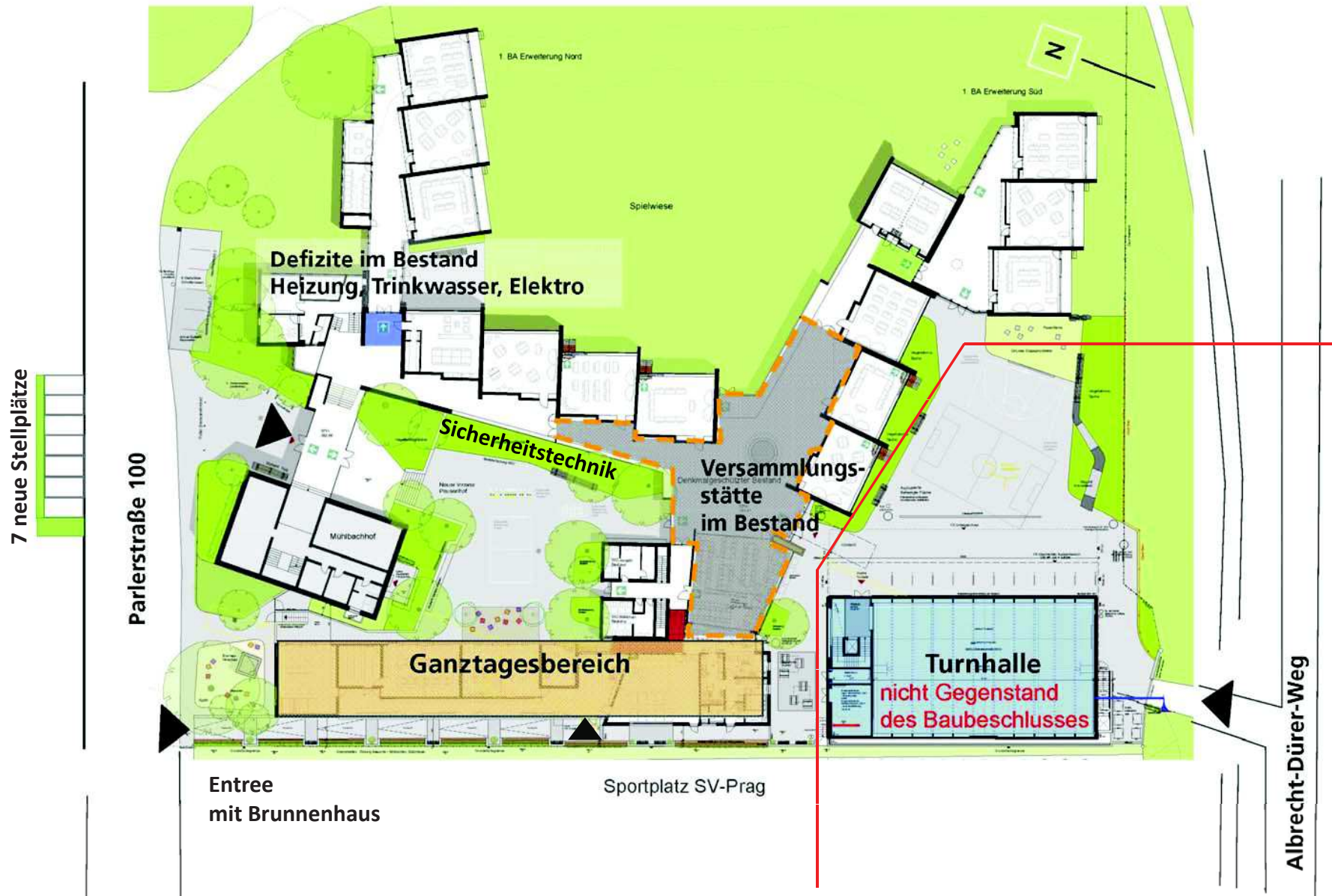


Lageplan



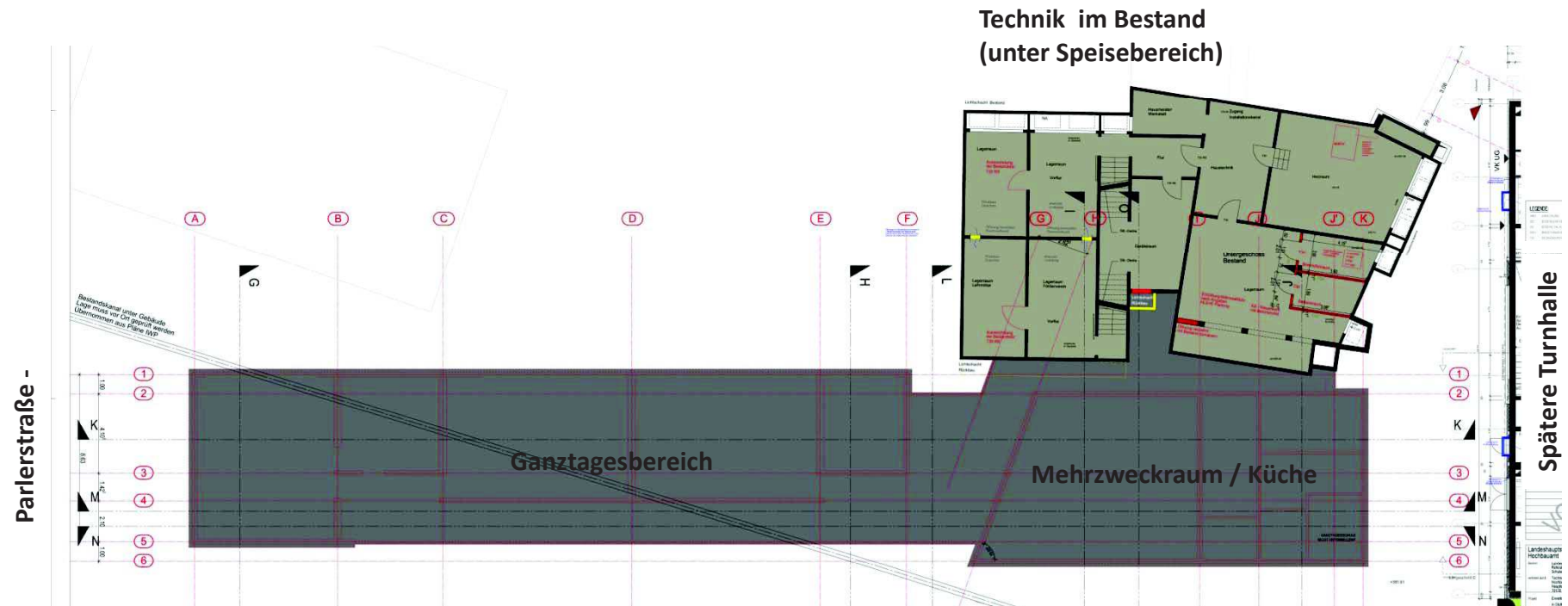
Grundriss: EG



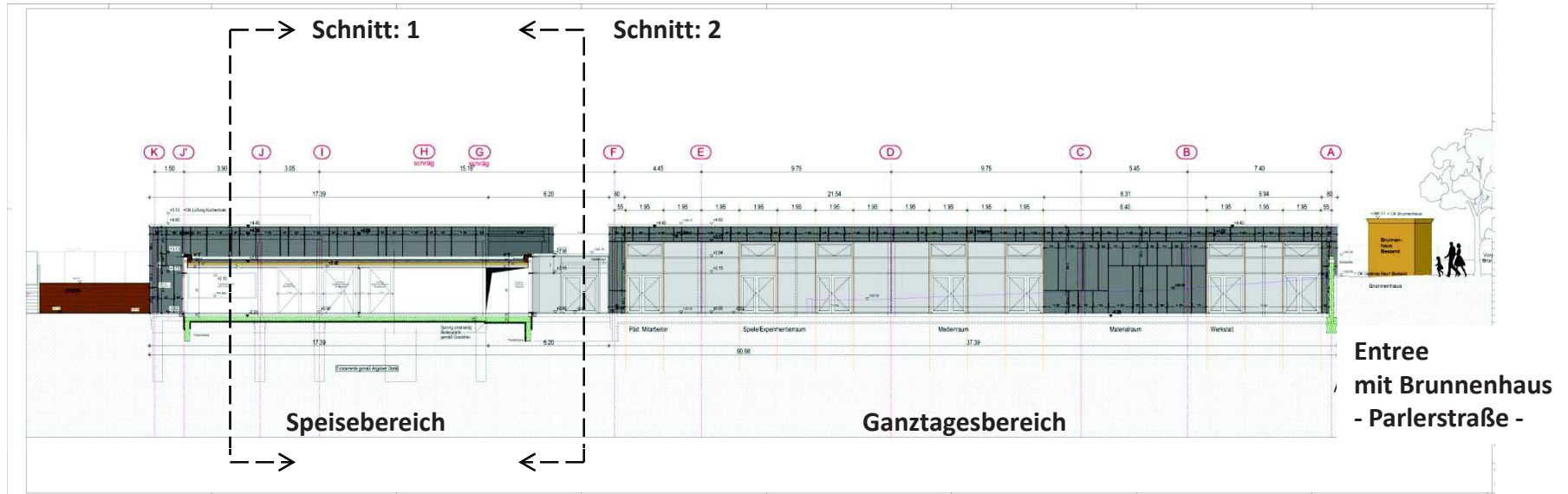
Parlerstraße -

Spätere Turnhalle

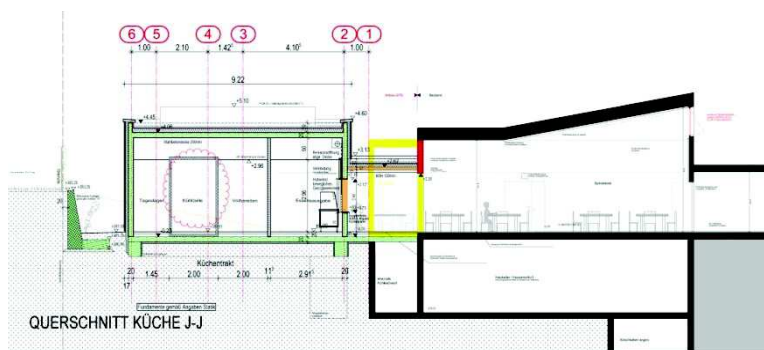
Grundriss: UG



Ansicht Ost: Pausenhof



Schnitt 1: Küche / Speisebereich

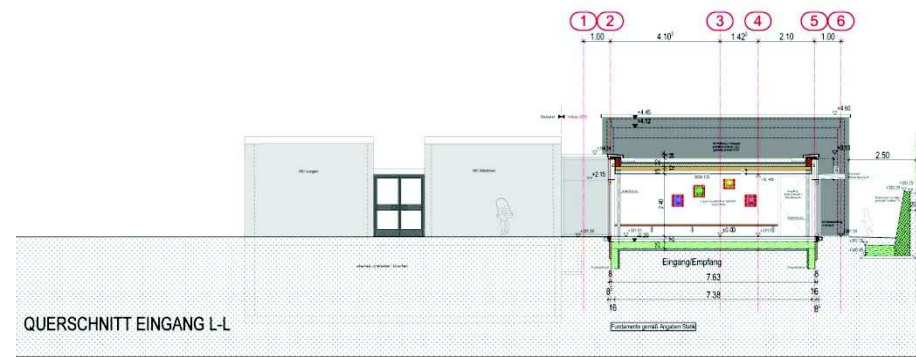


Zugang
„Erlebnisweg“

Küche

„Singsaal“
Speiseraum

Schnitt 2: Flur / Mehrzweckraum

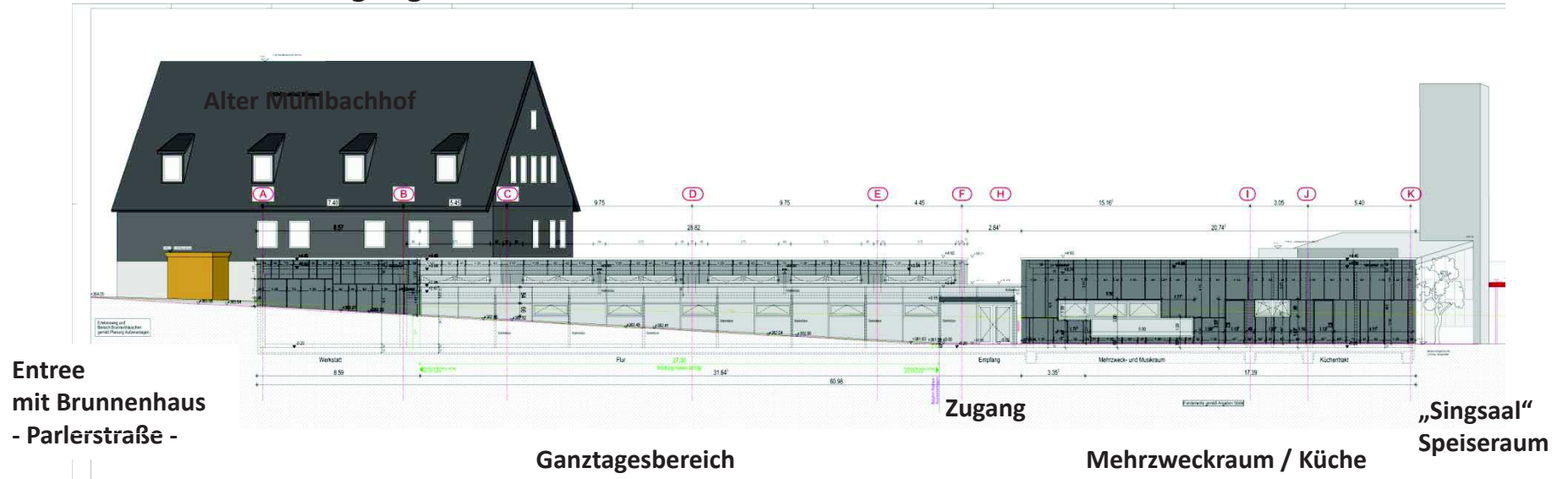


Pausenhof

GTS

Zugang
„Erlebnisweg“

Ansicht West: Zugang GTS



Längsschnitt:

